



CREEKSIDE



COMMUNITY SITE PLAN

ENJOY A CONVENIENT LOCATION AND LUXURY LIFESTYLE IN YOUR DREAM HOME AT CREEKSIDE

Living at Creekside offers you an array of activities, great schools and quick access to I-30 and Metro Dallas. Enjoy a resort-style swimming pool, splash pad, playground and several parks. And a new Amenity Center is on its way! There's a concrete rail system through Creekside for walkers and joggers and even a dog park for your four-legged friends.

A new elementary school will open in the Fall of 2025 in Creekside, an easy walk from your new home. The Royse City ISD has a reputation for excellence and is one of the most highly-regarded in the Metro Dallas area. Children also attend Ouida Middle School and Royse City High School, which has first class academic and athletic facilities and is only 7 minutes from Creekside.



AMENITY CENTER

With easy access to Highway 66 and I-30, Creekside is convenient to a wide variety of restaurants, shopping, entertainment and recreation in Royse City and in Metro Dallas. The community has a small town feel, but offers all the advantages of the big city. Now is the time to discover the Creekside lifestyle!



COMMUNITY SWIMMING POOL



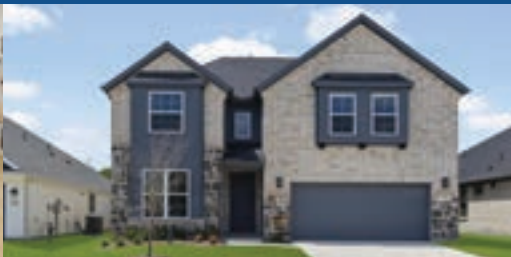
ROYSE CITY MURAL



ROYSE CITY HIGH



Site plan is for conceptual purposes only and is subject to change without notice. Landscaping depicted is not to scale and may vary as to majority and number. The Planned Amenity Center renderings are the artist's concepts. Prices, terms, features and availability are subject to change without notice.



CHOOSE FROM FOUR AWARD-WINNING HOMEBUILDERS AT CREEKSIDE

Finding your dream home at Creekside is easy - just tour the models and discover all the luxury and exciting designs you've imagined in your new home. Our participating homebuilders are some of the finest and most experienced builders in the Metro Dallas area. They offer a wide variety of architectural styles

and floor plans that today's families want, with plenty of space for the kids and lots of luxury for the adults. Homes that are designed with today's technology and upscale appointments that make your home an exciting place to live and entertain. You will love it here!



CREEKSIDE

CREEKSIDEROYSECITY.COM



Site plan is for conceptual purposes only and is subject to change without notice. Landscaping depicted is not to scale and may vary as to majority and number. The Planned Amenity Center renderings are the artist's concepts. Prices, terms, features and availability are subject to change without notice.

STARWOOD LAND: A LEADER IN MASTER-PLANNED COMMUNITY DEVELOPMENT

Since its inception in July 2007, Starwood Land has sold more than 50,000 homesites in over 100 communities in 11 states, and has generated almost \$4 Billion in residential land revenues. Partnering with Starwood Capital Group, one of the world's premier real estate investment firms, Starwood Land has invested more than \$1.8 Billion in superior residential communities throughout the United States.

In 2025 Starwood Land acquired 11 master-planned communities comprising more than 16,000 homesites and 600 acres of commercial property in three of the Top Ten largest U.S. new home markets – Dallas, Houston and Austin. In 2025, for the third consecutive year, Starwood Land's Sunterra in Houston is the #1 selling community in Texas.



TERRAMOR - LOS ANGELES



SUNTERRA - HOUSTON

